



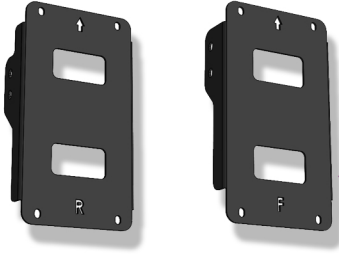
Workbasket adapter V3 - MOUNTING INSTRUCTIONS

veloe.eu/manuals

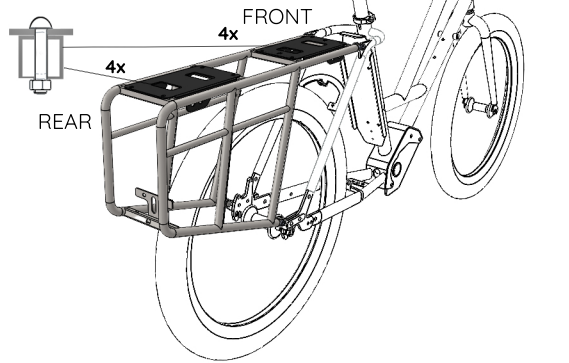
**TOOLS: allen key no.3
wrench no. 8**

FOR EACH (Front and Rear):

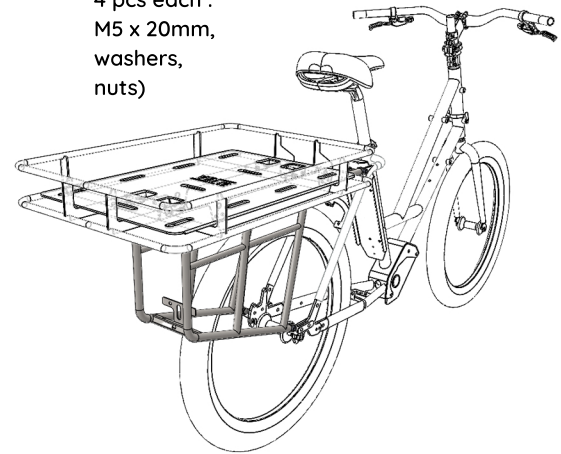
4 pcs 5x25 screws
4 pcs washers
4 pcs nuts



1. Fix both adapters with 4 nuts each on the rear rack, as shown (plate "F" goes in front of "R" (rear); tighten



(2. Insert Workbasket V2 with side nuts and tighten properly 4 pcs each : M5 x 20mm, washers, nuts)



In case of doubt contact your Veloe® retailer for a safe and comfortable ride

© veloe

more accessories at veloe.eu



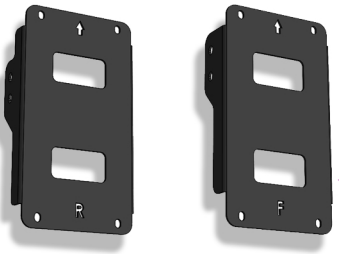
Workbasket adapter V3 - MOUNTING INSTRUCTIONS

veloe.eu/manuals

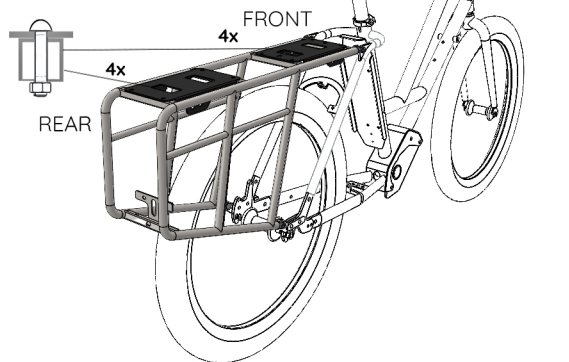
**TOOLS: allen key no.3
wrench no. 8**

FOR EACH (Front and Rear):

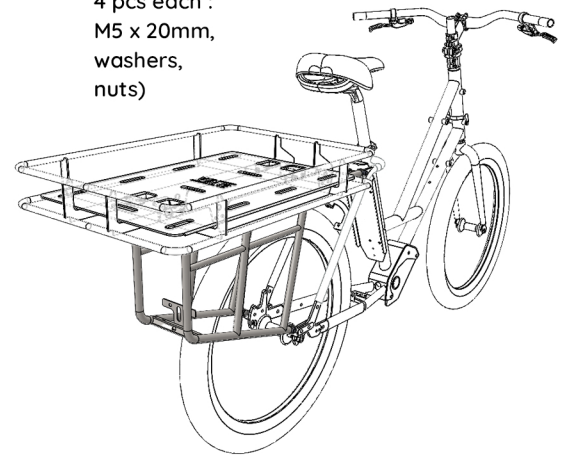
4 pcs 5x25 screws
4 pcs washers
4 pcs nuts



1. Fix both adapters with 4 nuts each on the rear rack, as shown (plate "F" goes in front of "R" (rear); tighten



(2. Insert Workbasket V2 with side nuts and tighten properly 4 pcs each : M5 x 20mm, washers, nuts)



In case of doubt contact your Veloe® retailer for a safe and comfortable ride

© veloe

more accessories at veloe.eu



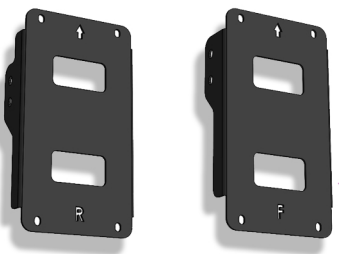
Workbasket adapter V3 - MOUNTING INSTRUCTIONS

veloe.eu/manuals

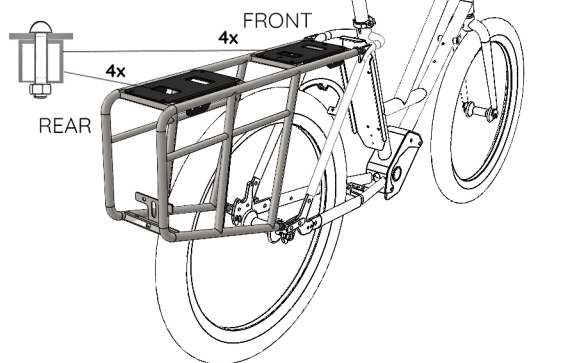
**TOOLS: allen key no.3
wrench no. 8**

FOR EACH (Front and Rear):

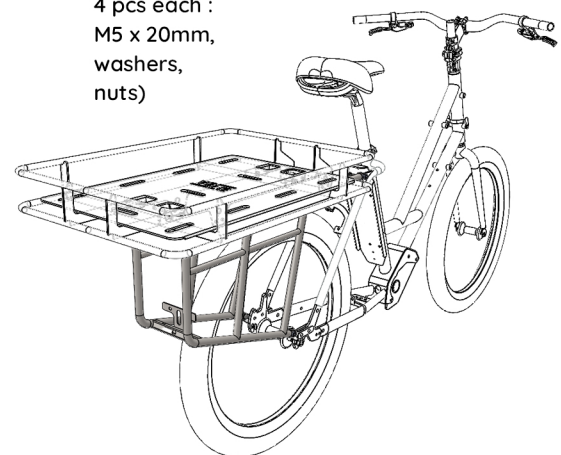
4 pcs 5x25 screws
4 pcs washers
4 pcs nuts



1. Fix both adapters with 4 nuts each on the rear rack, as shown (plate "F" goes in front of "R" (rear); tighten



(2. Insert Workbasket V2 with side nuts and tighten properly 4 pcs each : M5 x 20mm, washers, nuts)



In case of doubt contact your Veloe® retailer for a safe and comfortable ride

© veloe

more accessories at veloe.eu