

VELOE multi lungo

Tools: torx key no.40,
wrench no. 15, pliers

FRONT

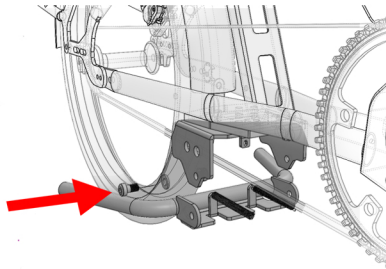
- 2 pcs 8x25 screws
- 2 pcs washers (metal)
- 2 pcs washers (nylon)
- 2 pcs nuts
- 2 springs



Kickstand Veloe - MOUNTING INSTRUCTIONS

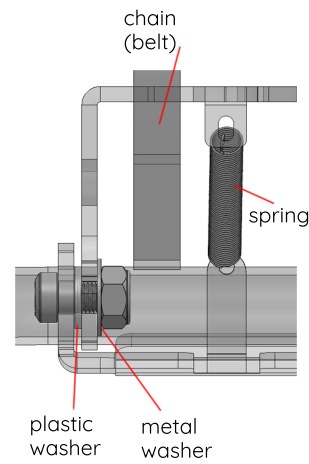
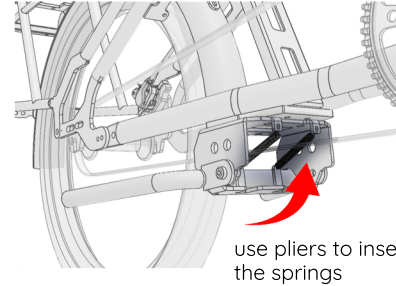
veloe.eu/manuals

1. Position the bike against a wall or on a bikestand;
2. Get the kickstand legs and insert the 2 springs (they will hang loose until passage 4);



3. Get screws and the plastic washer and insert as shown, on both sides. Tighten the nuts with metal washers (max 4 Nm);

4. in KS upper position get a plier pull the other end of the springs and insert them on the frame bracket



In case of doubt contact your Veloe® retailer for a safe and comfortable ride

© veloe

more accessories at veloe.eu

VELOE multi lungo

Tools: torx key no.40,
wrench no. 15, pliers

FRONT

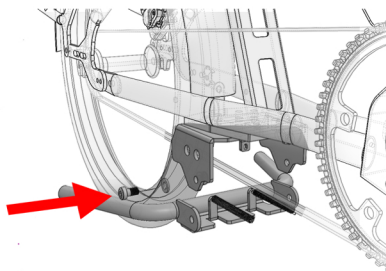
- 2 pcs 8x25 screws
- 2 pcs washers (metal)
- 2 pcs washers (nylon)
- 2 pcs nuts
- 2 springs



Kickstand Veloe - MOUNTING INSTRUCTIONS

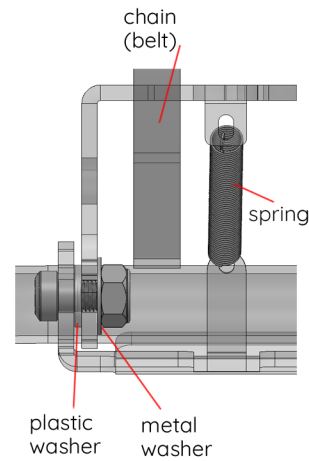
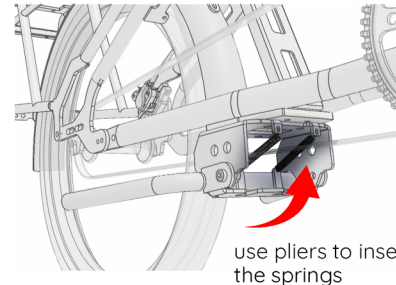
veloe.eu/manuals

1. Position the bike against a wall or on a bikestand;
2. Get the kickstand legs and insert the 2 springs (they will hang loose until passage 4);



3. Get screws and the plastic washer and insert as shown, on both sides. Tighten the nuts with metal washers (max 4 Nm);

4. in KS upper position get a plier pull the other end of the springs and insert them on the frame bracket



In case of doubt contact your Veloe® retailer for a safe and comfortable ride

© veloe

more accessories at veloe.eu

VELOE multi lungo

Tools: torx key no.40,
wrench no. 15, pliers

FRONT

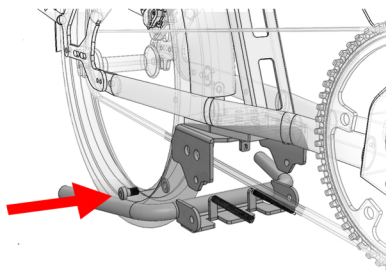
- 2 pcs 8x25 screws
- 2 pcs washers (metal)
- 2 pcs washers (nylon)
- 2 pcs nuts
- 2 springs



Kickstand Veloe - MOUNTING INSTRUCTIONS

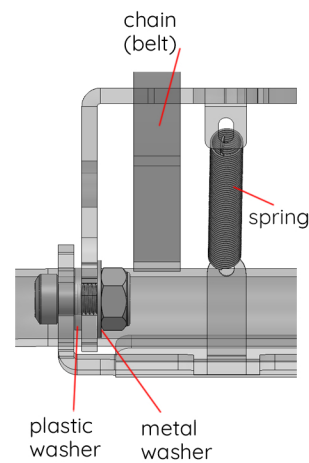
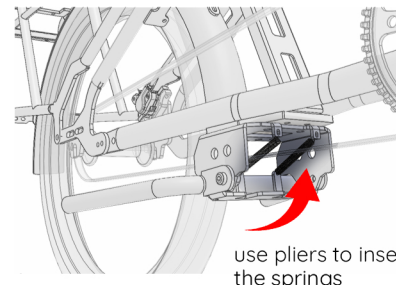
veloe.eu/manuals

1. Position the bike against a wall or on a bikestand;
2. Get the kickstand legs and insert the 2 springs (they will hang loose until passage 4);



3. Get screws and the plastic washer and insert as shown, on both sides. Tighten the nuts with metal washers (max 4 Nm);

4. in KS upper position get a plier pull the other end of the springs and insert them on the frame bracket



In case of doubt contact your Veloe® retailer for a safe and comfortable ride

© veloe

more accessories at veloe.eu